



REGIONAL SPECIALISED METEOROLOGICAL CENTRE-TROPICAL CYCLONES, NEW DELHI  
TROPICAL WEATHER OUTLOOK

DEMS-RSMC TROPICAL CYCLONES NEW DELHI DATED 25.10.2023

**SPECIAL TROPICAL WEATHER OUTLOOK FOR NORTH INDIAN OCEAN (THE BAY OF BENGAL AND THE ARABIAN SEA) VALID FOR NEXT 168 HOURS ISSUED AT 0600 UTC OF 25.10.2023 BASED ON 0300 UTC OF 25.10.2023.**

**SUB: CYCLONIC STORM "HAMOON" (PRONOUNCED AS HAMOON) OVER COASTAL BANGLADESH WEAKENED INTO DEEP DEPRESSION OVER SOUTHEAST BANGLADESH AND ADJOINING MYANMAR**

THE CYCLONIC STORM "HAMOON" (PRONOUNCED AS HAMOON) OVER COASTAL BANGLADESH MOVED NEARLY NORTHEASTWARDS WITH A SPEED OF 10 KMPH DURING PAST 6 HOURS, **WEAKENED INTO A DEEP DEPRESSION** AND LAY CENTERED AT 0300 UTC OF 25<sup>TH</sup> OCTOBER OVER SOUTHEAST BANGLADESH & ADJOINING MIZORAM NEAR LATITUDE 22.4°N AND LONGITUDE 92.4°E, ABOUT 60 KM EAST OF CHITTAGONG (BANGLADESH, 41977) AND 160 KM SOUTH-SOUTHEAST OF AIZAWL (MIZORAM, INDIA).

IT IS VERY LIKELY TO MOVE NORTHEASTWARDS AND WEAKEN FURTHER INTO A DEPRESSION DURING NEXT 06 HOURS AND INTO A WELL MARKED LOW PRESSURE AREA DURING SUBSEQUENT 06 HOURS.

**FORECAST TRACK AND INTENSITY ARE GIVEN BELOW:**

DATE/TIME (UTC)	POSITION (LAT. °N/ LONG. °E)	MAXIMUM SUSTAINED SURFACE WIND SPEED (KMPH)	CATEGORY OF CYCLONIC DISTURBANCE
25.10.23/0300	22.4/92.4	55-65 gusting to 75	Deep Depression
25.10.23/0600	22.8/92.7	50-60 gusting to 70	Deep Depression
25.10.23/1200	23.4/93.2	40-50 gusting to 60	Depression
25.10.23/1800	24.0/93.7	25-35 gusting to 45	Well Marked Low Pressure Area

AS PER INSAT 3D IMAGERY, ASSOCIATED BROKEN LOW TO MEDIUM CLOUDS WITH EMBEDDED WEAK TO MODERATE CONVECTION LIES OVER EAST BANGLADESH, NORTHEAST STATES OF INDIA AND NORTH MYANMAR. MINIMUM CTT - 35 DEG CEL.

ASSOCIATED MAXIMUM SUSTAINED WIND SPEED IS 30 KNOTS GUSTING TO 40 KNOTS. THE ESTIMATED CENTRAL PRESSURE IS 1006 HPA.

**(II) WIND WARNING (WARNING GRAPHICS ENCLOSED):**

- NORTHEAST BAY OF BENGAL:**  
**SQUALLY WIND SPEED REACHING 50-60 KMPH GUSTING TO 70 KMPH IS PREVAILING AND IS LIKELY TO DECREASE GRADUALLY BECOMING 35-45 KMPH GUSTING TO 55 KMPH BY 1200 UTC OF 25<sup>TH</sup> AND WOULD DECREASE THEREAFTER.**

- **ALONG & OFF BANGLADESH AND NORTH MYANMAR COASTS:**  
**SQUALLY WIND SPEED REACHING 50-60 KMPH GUSTING TO 70 KMPH IS PREVAILING ALONG & OFF BANGLADESH AND ADJOINING NORTH MYANMAR COAST AND LIKELY TO DECREASE GRADUALLY BECOME 35-45 KMPH GUSTING TO 55 KMPH BY 1200 UTC OF 25<sup>TH</sup> AND WOULD DECREASE FURTHER THEREAFTER.**
- **MIZORAM, TRIPURA, SOUTH ASSAM AND MANIPUR:**  
**SQUALLY WIND SPEED REACHING 30-40 KMPH GUSTING TO 50 KMPH IS LIKELY TO PREVAIL OVER MIZORAM AND TRIPURA AND STRONG WIND SPEED REACHING 25-35 KMPH GUSTING TO 45 KMPH OVER MANIPUR ON 25<sup>TH</sup> OCTOBER.**

**(III) SEA CONDITION**

**NORTHEAST BAY OF BENGAL AND ALONG & OFF BANGLADESH & ADJOINING NORTH MYANMAR COASTS:**

**VERY ROUGH TO ROUGH SEA CONDITION WOULD PREVAIL DURING NEXT 06 HOURS AND WOULD IMPROVE THEREAFTER.**

**(IV) FISHERMEN WARNING (GRAPHICS ATTACHED):**

**FISHERMEN ARE ADVISED NOT TO VENTURE INTO NORTHEAST BAY OF BENGAL AND ALONG & OFF BANGLADESH & NORTH MYANMAR COASTS TILL 1200 UTC OF 25<sup>TH</sup> OCTOBER.**

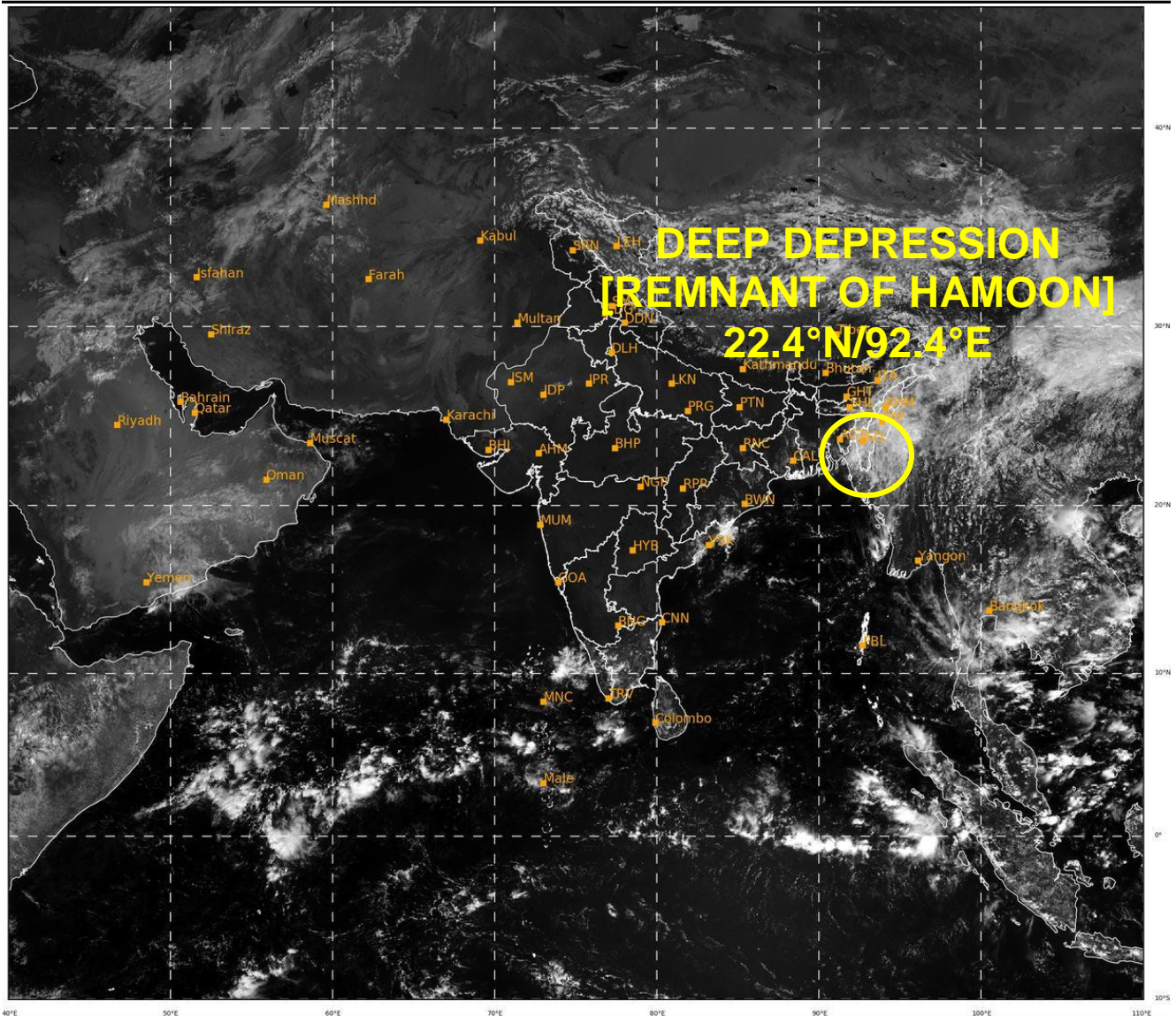
**REMARKS:**

**BAY OF BENGAL:**

THE LOW LEVEL POSITIVE VORTICITY HAS FURTHER DECREASED IN PAST 03 HOURS AND IS AROUND  $25 \times 10^{-6} \text{S}^{-1}$  TO THE SOUTH OF SYSTEM CENTER. THE LOW LEVEL CONVERGENCE IS SAME AND IS ABOUT  $10 \times 10^{-5} \text{S}^{-1}$  TO THE SOUTHEAST OF SYSTEM CENTRE. UPPER LEVEL DIVERGENCE IS SAME AND IS ABOUT  $10 \times 10^{-5} \text{S}^{-1}$  TO THE NORTHEAST OF SYSTEM CENTRE AND ALONG THE FORECAST TRACK OF SYSTEM. THE SYSTEM IS MOVING INTO A ZONE OF HIGH (> 40 KNOTS) WIND SHEAR.

IN VIEW OF THE ABOVE, THE DEEP DEPRESSION OVER SOUTHEAST BANGLADESH & ADJOINING MIZORAM IS VERY LIKELY TO MOVE NORTHEASTWARDS AND WEAKEN INTO A DEPRESSION DURING NEXT 06 HOURS AND FURTHER INTO A WELL MARKED LOW PRESSURE AREA DURING SUBSEQUENT 06 HOURS.

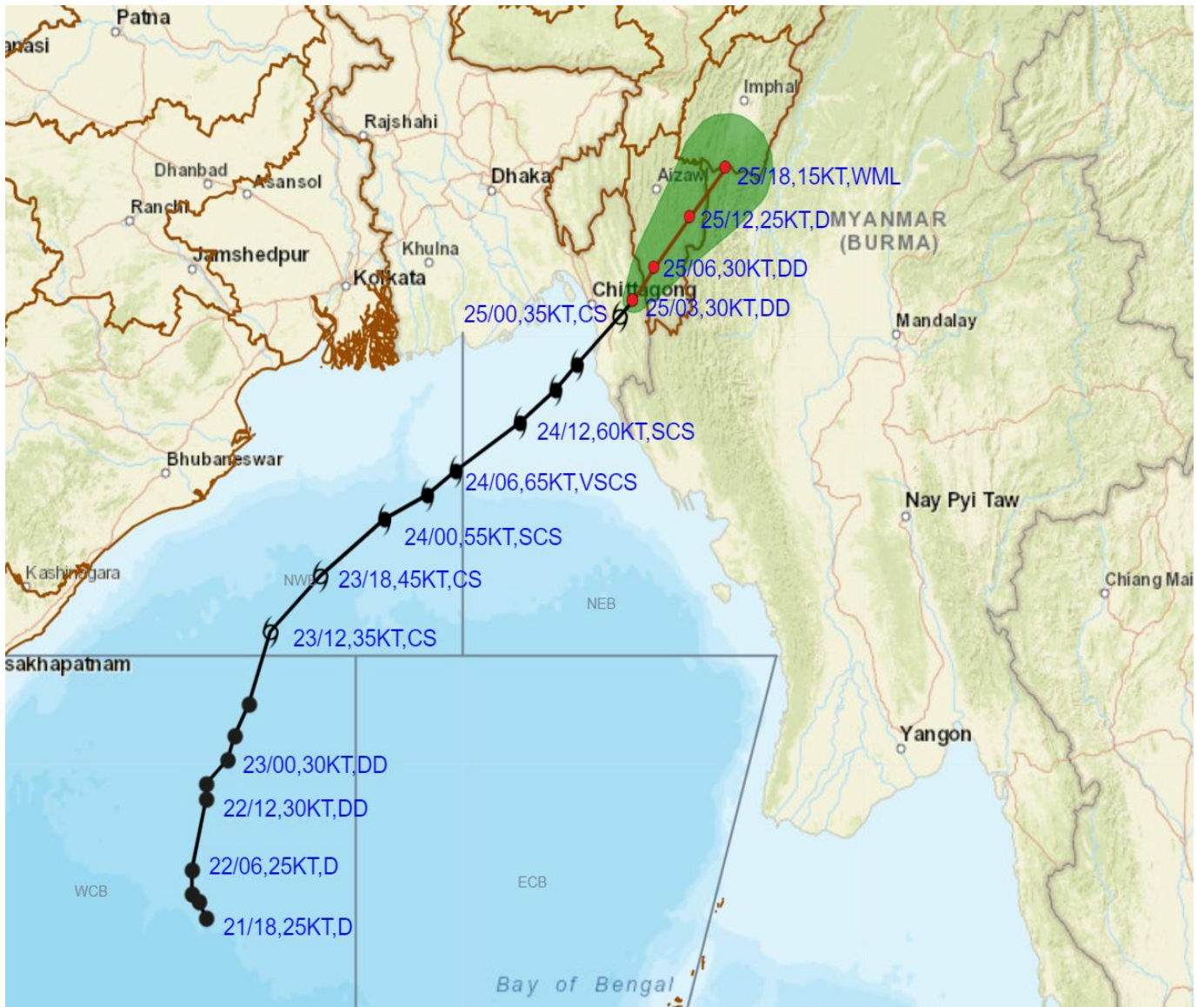
(M SHARMA)  
SCIENTIST-D  
RSMC NEW DELHI







**OBSERVED AND FORECAST TRACK ALONGWITH CONE OF UNCERTAINTY OF DEEP DEPRESSION (REMNANT OF CYCLONIC STORM HAMOON) OVER SOUTHEAST BANGLADESH & ADJOINING MIZORAM BASED ON 0300 UTC (0830 IST) OF 25<sup>TH</sup> OCTOBER 2023.**



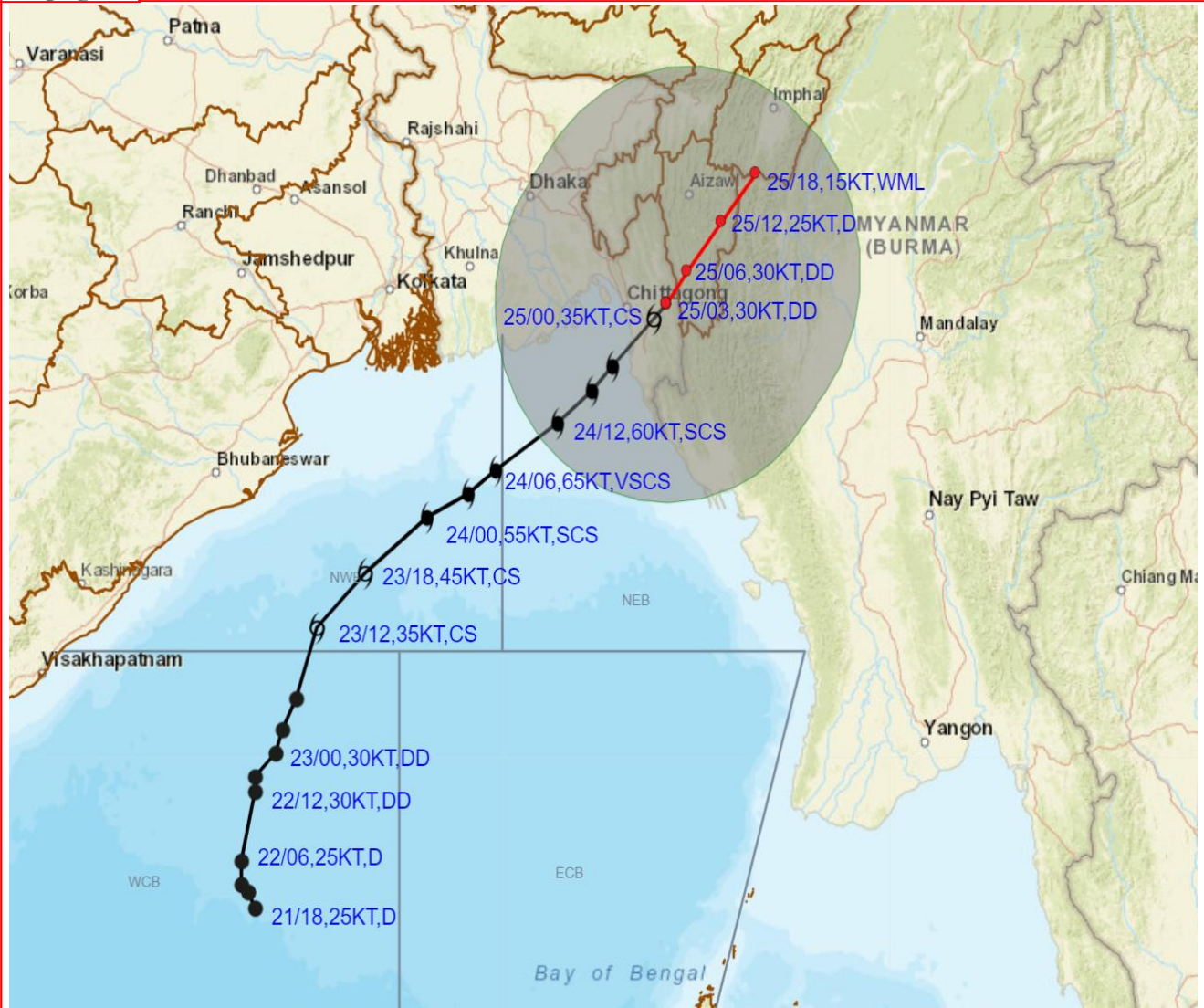
DATE/TIME IN UTC  
 IST=UTC + 0530  
 L: LOW PRESSURE AREA  
 WML: WELL MARKED LOW PRESSURE AREA  
 D: DEPRESSION (17-27 KT)  
 DD: DEEP DEPRESSION (28-33 KT)  
 CS: CYCLONIC STORM (34-47 KT)  
 SCS: SEVERE CYCLONIC STORM (48-63KT)  
 VSCS: VERY SEVERE CYCLONIC STORM (64-89 KT)  
 ESCS: EXTREMELY SEVERE CYCLONIC STORM (90-119 KT)  
 SuCS: SUPER CYCLONIC STORM (≥ 120 KT)

- LESS THAN 34 KT
- 34-47 KT
- ≥ 48 KT
- OBSERVED TRACK
- FORECAST TRACK
- CONE OF UNCERTAINTY

Cloud distribution: (a) Isolated: <25%, Scattered:25-50%, Broken: 51-75%, Solid:>75%, Convection Intensity: (a) Weak: Cloud Top Temperature (CTT) >-25°C, (b) Moderate: CTT: - 25°C to -40°C, (c) Intense: CTT: - 41°C to -70°C and (d) Very Intense: : Less than -70°C  
 PROBABILITY OF CYCLOGENESIS (FORMATION OF DEPRESSION):NIL: 0%, LOW: 1-33%, , MODERATE: 34-66% AND HIGH: 67-100%  
 This is a guidance Bulletin for WMO/ESCAP Panel Member countries. Visit respective National websites for Country specific Bulletins



**OBSERVED AND FORECAST TRACK ALONGWITH QUADRANT WIND DISTRIBUTION OF DEEP DEPRESSION (REMNANT OF CYCLONIC STORM HAMOON) OVER SOUTHEAST BANGLADESH & ADJOINING MIZORAM BASED ON 0300 UTC (0830 IST) OF 25<sup>TH</sup> OCTOBER 2023.**



DATE/TIME IN UTC

IST=UTC + 0530

L: LOW PRESSURE AREA

WML: WELL MARKED LOW PRESSURE AREA

D: DEPRESSION (17-27 KT)

DD: DEEP DEPRESSION (28-33 KT)

CS: CYCLONIC STORM (34-47 KT)

SCS: SEVERE CYCLONIC STORM (48-63KT)

VSCS: VERY SEVERE CYCLONIC STORM (64-89 KT)

ESCS: EXTREMELY SEVERE CYCLONIC STORM (90-119 KT)

SuCS: SUPER CYCLONIC STORM ( $\geq 120$  KT)

● LESS THAN 34 KT

○ 34-47 KT

⊙  $\geq 48$  KT

— OBSERVED TRACK

— FORECAST TRACK

▲ CONE OF UNCERTAINTY

AREA OF MAXIMUM SUSTAINED WIND SPEED:

■ 28-33 KT (52-61 KMPH)

■ 34-49 KT (62-91 KMPH)

■ 50-63 KT (92-117 KMPH)

■  $\geq 64$  KT ( $\geq 118$  KMPH)

**IMPACT OVER THE SEA**

MSW (knot/kmph)	Impact	Action
28-33 (52-61)	Very rough seas	Total suspension of fishing operations
34-49 (62-91)	High to very high seas	Total suspension of fishing operations
50-63 (92-117)	Very high seas	Total suspension of fishing operations
$\geq 64$ ( $\geq 118$ )	Phenomenal	Total suspension of fishing operations

Cloud distribution: (a) Isolated: <25%, Scattered:25-50%, Broken: 51-75%, Solid:>75%, Convection Intensity: (a) Weak: Cloud Top Temperature (CTT) >-25°C, (b) Moderate: CTT: - 25°C to -40°C, (c) Intense: CTT: - 41°C to -70°C and (d) Very Intense: : Less than -70°C  
**PROBABILITY OF CYCLOGENESIS (FORMATION OF DEPRESSION):NIL: 0%, LOW: 1-33%, , MODERATE: 34-66% AND HIGH: 67-100%**  
 This is a guidance Bulletin for WMO/ESCAP Panel Member countries. Visit respective National websites for Country specific Bulletins



## Fishermen warning graphics



Cloud distribution: (a) Isolated: <25%, Scattered:25-50%, Broken: 51-75%, Solid:>75%, Convection Intensity: (a) Weak: Cloud Top Temperature (CTT) >-25°C, (b) Moderate: CTT: - 25°C to -40°C, (c) Intense: CTT: - 41°C to -70°C and (d) Very Intense: : Less than -70°C  
 PROBABILITY OF CYCLOGENESIS (FORMATION OF DEPRESSION):NIL: 0%, LOW: 1-33%, , MODERATE: 34-66% AND HIGH: 67-100%  
 This is a guidance Bulletin for WMO/ESCAP Panel Member countries. Visit respective National websites for Country specific Bulletins